

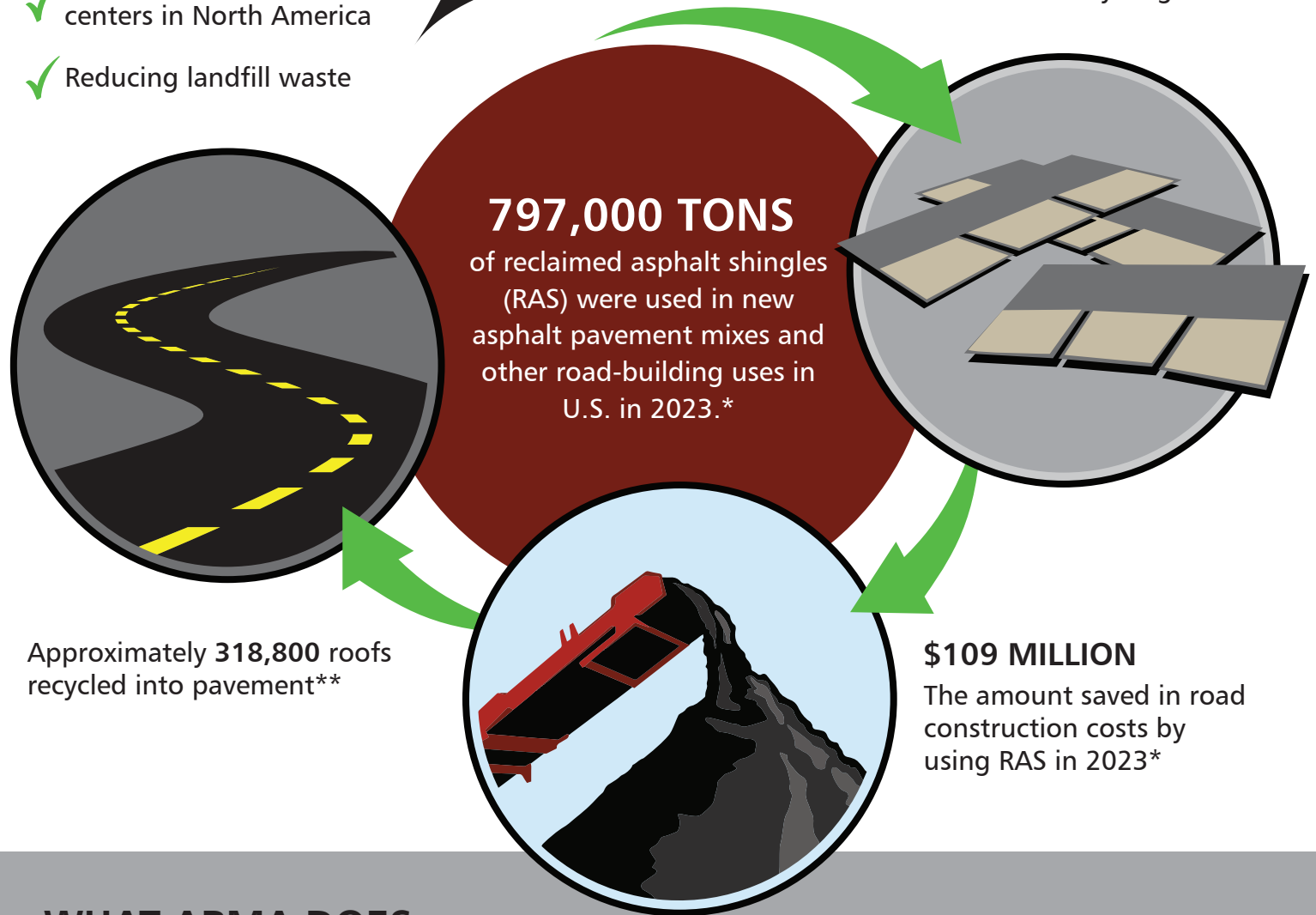
SHINGLE RECYCLING IS:

- ✓ Cost effective
- ✓ Widely accepted at centers in North America
- ✓ Reducing landfill waste



A SECOND LIFE

Shingle tear-offs can be taken to recycling centers.



WHAT ARMA DOES:

- Members participate and support the advancement of shingle recycling by researching and reporting on other applications of recycled shingle content.
- Work with National Asphalt Paving Association (NAPA) and Asphalt Institute to expand use of RAS in paving.

*National Asphalt Pavement Association (NAPA) - Asphalt Pavement Industry Survey on Recycled Materials and Warm-Mix Asphalt Usage 2023

**Estimate is based on assumption the shingles disposed during a typical single-layer roof replacement project weigh 2.5 pounds per square foot of roof area, and the average size of typical roof is 2,000 square feet.