

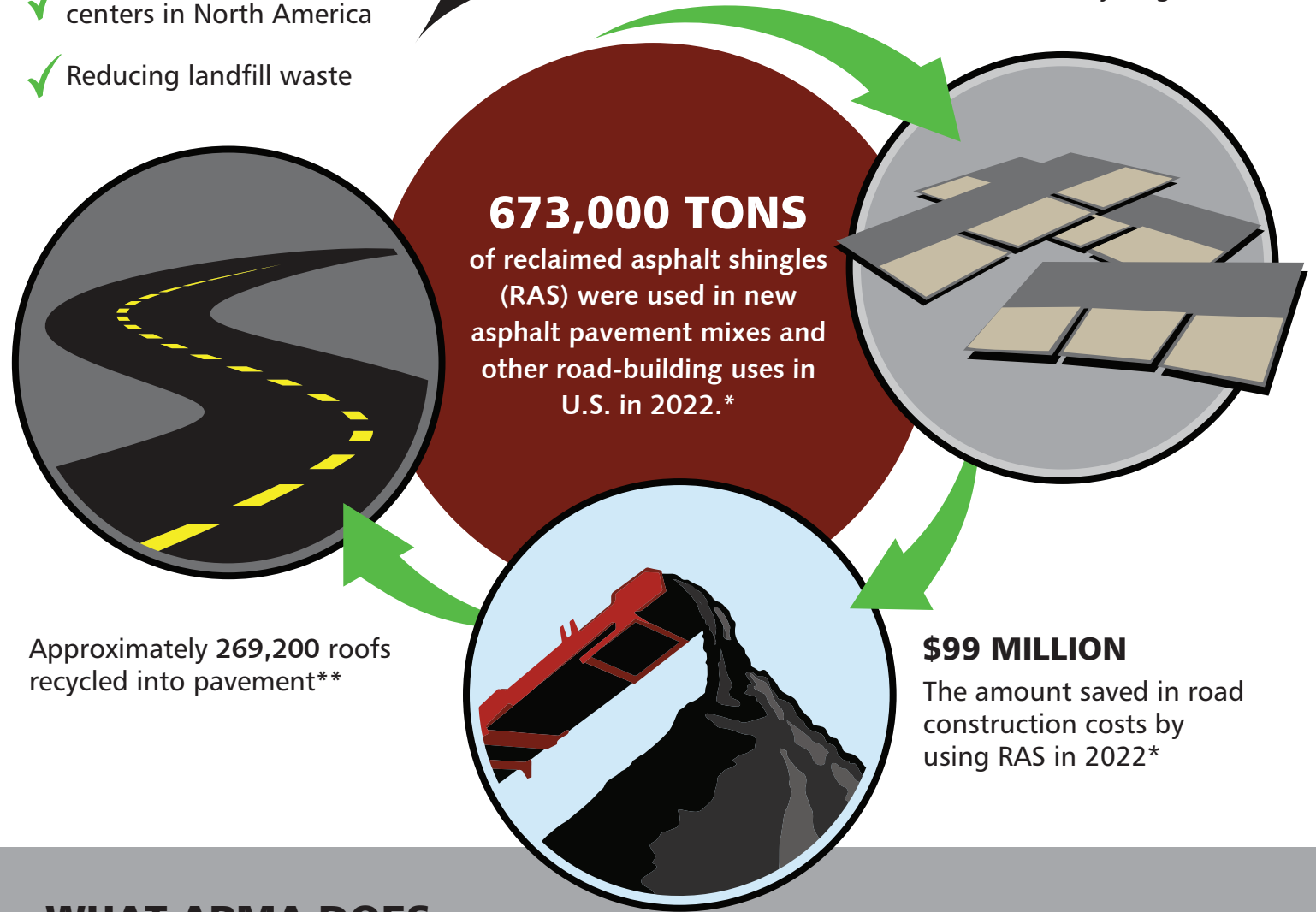
**SHINGLE RECYCLING IS:**

- ✓ Cost effective
- ✓ Widely accepted at centers in North America
- ✓ Reducing landfill waste



**A SECOND LIFE**

Shingle tear-offs can be taken to recycling centers.



**673,000 TONS**  
of reclaimed asphalt shingles (RAS) were used in new asphalt pavement mixes and other road-building uses in U.S. in 2022.\*

Approximately 269,200 roofs recycled into pavement\*\*

**\$99 MILLION**

The amount saved in road construction costs by using RAS in 2022\*

**WHAT ARMA DOES:**

- Members participate and support the advancement of shingle recycling by researching and reporting on other applications of recycled shingle content.
- Work with National Asphalt Paving Association (NAPA) and Asphalt Institute to expand use of RAS in paving.

\*National Asphalt Pavement Association (NAPA) - Asphalt Pavement Industry Survey on Recycled Materials and Warm-Mix Asphalt Usage 2022

\*\*Estimate is based on assumption the shingles disposed during a typical single-layer roof replacement project weigh 2.5 pounds per square foot of roof area, and the average size of typical roof is 2,000 square feet.