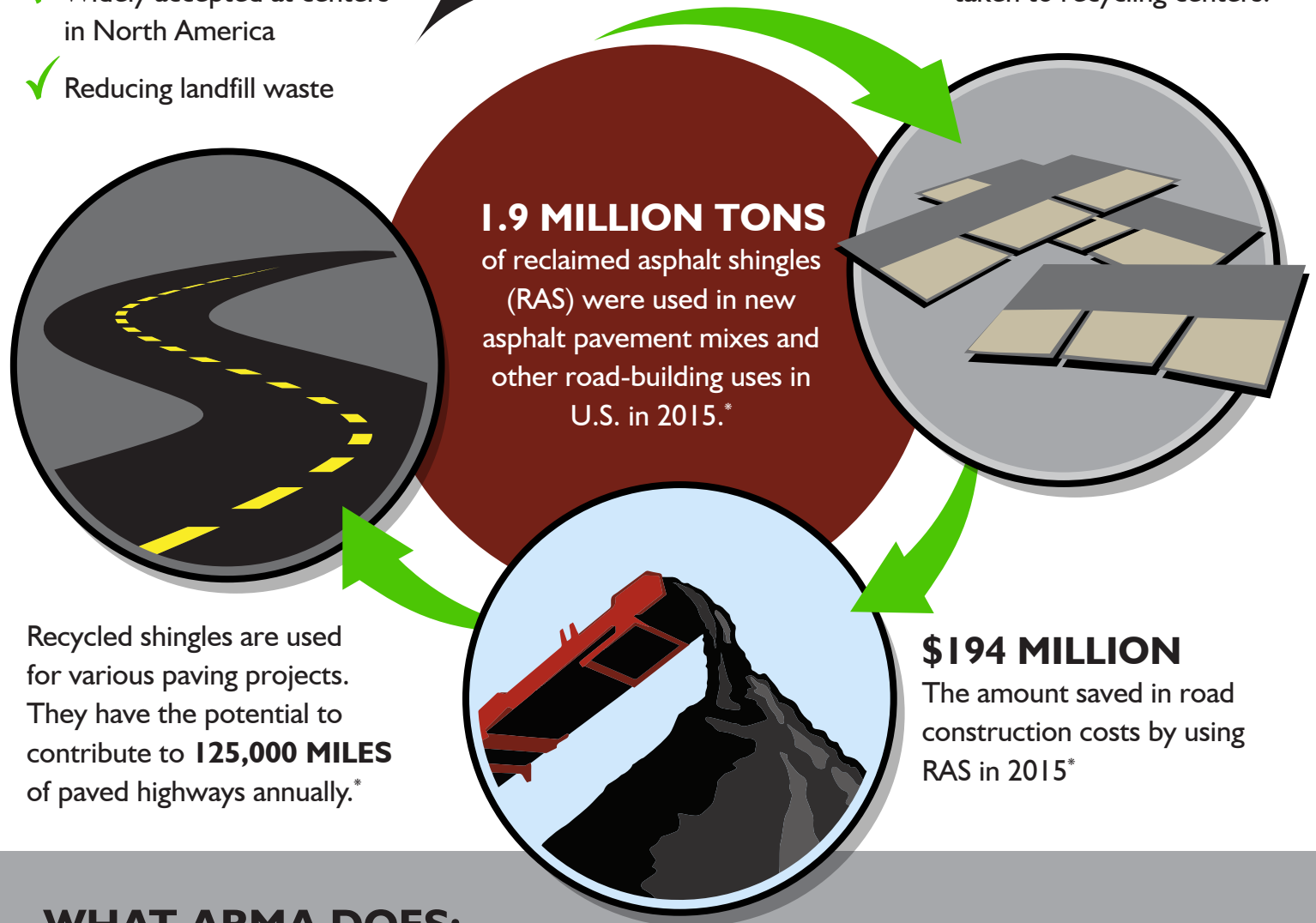


**SHINGLE RECYCLING IS:**

- ✓ Cost effective
- ✓ Widely accepted at centers in North America
- ✓ Reducing landfill waste



**A SECOND LIFE**  
Shingle tear-offs can be taken to recycling centers.



Recycled shingles are used for various paving projects. They have the potential to contribute to **125,000 MILES** of paved highways annually.\*

**\$194 MILLION**  
The amount saved in road construction costs by using RAS in 2015\*

**WHAT ARMA DOES:**

- Members participate and support the advancement of shingle recycling by researching and reporting on other applications of recycled shingle content.
- Work with National Asphalt Paving Association (NAPA) and Asphalt Institute to expand use of RAS in paving.

\* National Asphalt Pavement Association (NAPA) – Asphalt Pavement Industry Survey on Recycled Materials and Warm-Mix Asphalt Usage 2015