



Asphalt roofing is chosen for its beauty, affordability and reliability

ARMA's Quality Asphalt Roofing Case-Study (QARC) Awards Program seeks to recognize contractors across North America who choose asphalt roofing and who install beautiful, high-performing systems. These contractors choose asphalt roofing materials for their range of colors and designs, for their ability to meet stringent project requirements and for the peace of mind they bring to a homeowner or building owner.

The projects honored in this year's QARC Awards Program use asphalt roofing in numerous ways. Some rely on the redundant, weatherproof layers of low-slope membranes to provide durability and protection to a building and its inhabitants. Others use designer shingles to match a unique design

www.asphaltroofing.org

aesthetic, to blend with the environment of a home or to mimic the look of a more expensive roofing material. Whatever the reason, these award-winning installations demonstrate the numerous challenges that asphalt roofing can help to solve.

ARMA receives dozens of submissions each year that are judged by a panel of roofing industry experts, including leaders from multiple trade associations, architects and members of the media. The judges look for projects that use asphalt roofing technology to provide durability, value and curb appeal.

2017 QARC HONORABLE MENTIONS

The Richard Morrow House

Valley Roofing
Salem, Oregon

Shelly Drive Home

Current Remodeling, Inc.
Vancouver, Washington

Putter Lane Residence

Tom Goldston Roofing
Gardnerville, Nevada

Little Jungle Day Care

M & J Construction
Moorhead, Minnesota

The Asphalt Roofing Manufacturers Association

For more than a century, ARMA has served the industry as a champion for asphalt roofing and a leader in education and innovation. The organization's membership includes nearly every asphalt roofing manufacturer in North America and their raw material suppliers. Since it was founded in 1915, ARMA has worked to advance the industry, to aid in the development of codes and standards, and to promote asphalt roofing to both the building industry and the public.

Roofing contractors, specifiers, engineers, architects and consultants are invited to submit their best projects to future QARC Awards

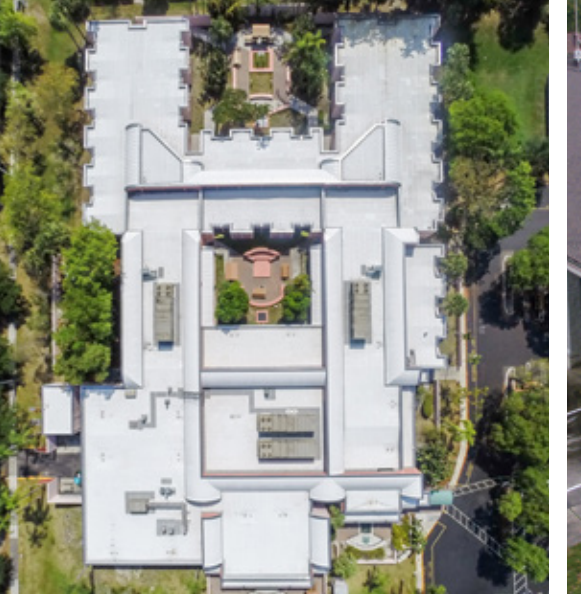
Programs for a chance at national recognition and cash prizes. Roofing professionals can submit multiple projects for consideration, from small residential projects to large commercial roofing systems.

The submission process is easy. Simply fill out the online form, explain why asphalt was used for the project and upload your best high-resolution roofing photos. ARMA will showcase the most innovative asphalt roofing systems on its website and will promote the winners within the roofing industry. The awards program is free to enter. Visit asphaltroofing.org for more information.



Asphalt Roofing Manufacturers Association

750 National Press Building
529 14th Street, NW
Washington, DC 20045
202.591.2450



The 2017 Quality Asphalt Roofing Case-Study (QARC) Awards Program



**FEATURING THE PREMIER
ASPHALT ROOFING SYSTEMS
IN NORTH AMERICA**





The Triangle Home - Chapel Hill Roofing Company, Chapel Hill, North Carolina

When the roof of The Triangle Home started to leak, the homeowners knew it needed to be replaced immediately. They worked with Chapel Hill Roofing Company of Chapel Hill, North Carolina, to identify the right product for their needs. The homeowners researched every type of roofing material, from slate to wood shake and metal. Ultimately, they chose asphalt shingles because they provided more color options, protection from the elements and algae resistance properties. The affordability was also an important factor. The homeowners were delighted to discover that they could get a

beautiful roof at a price well below that of real cedar shake. Chapel Hill Roofing installed a CertainTeed Integrity Roof System™, which consisted of Landmark® shingles in the color Pewter; WinterGuard® ice and water barrier; DiamondDeck® underlayment; SwiftStart® starter shingles; CertainTeed Ridge Vent; and Shadow Ridge® accessory shingles on the hips and ridges. The complexity of the roof made for a challenging installation, as there were many different roof slopes and 11 skylights that had to be replaced.



Stephen R. Booher Building - Advanced Roofing, Inc., Fort Lauderdale, Florida

The 49,955-square-foot roof of the Broward County Addiction Recovery Center's Stephen R. Booher Building was facing numerous leaks. Advanced Roofing, Inc. (ARI) in Fort Lauderdale, Florida, was called upon to build a new, high-performance roof system that would provide the weatherability needed to protect the building's residents. A Johns Manville SBS modified bitumen membrane, DynaLastic® 180 S, was selected as the base sheet. The base sheet was mechanically fastened and the laps were heat welded. All subsequent

layers—the DynaWeld™ Base sheet and DynaWeld™ Cap FR CR — were also heat welded. In areas with low flashings, JM PermaFlash® was utilized to terminate the roof system. The SBS modified bitumen roofing system was chosen for the low-slope portions of this roof to provide a proven system with the durability to withstand the torrential rainstorms and high winds common in Florida. Installing a roof of this magnitude requires significant skill and work. ARI was able to complete the project on time and within budget.



Burlington Fire Department - Cascade Roofing Company, Inc., Burlington, Washington

The Burlington Fire Department was in need of a new roof, due to existing leaks. They contracted with Cascade Roofing out of Burlington, Washington. The building required a product that had visual appeal, wind resistance and algae resistance. PABCO® Roofing's Paramount® Signature Cut Shingle in Oakwood color became a favorite among the design team. The roof is 209 squares, or about the size of 6 or 7 standard homes. On such a large building, asphalt shingles provided the best longevity and durability for the

price per square. This was a heavyweight shingle, and provided curb appeal, superior seal-down and protection from the elements. Cascade Roofing installed a full asphalt roofing system, including a synthetic underlayment and an ice and water shield on the leading edges. By successfully finding a local manufacturer and supplier, and by coordinating product delivery, Cascade ensured a seamless process for the building owner that met the project's budget and installation requirements.